



Rental Equipment Rate Guide

- Rate Guide published April 2022.
- Rates are subject to change without notice.

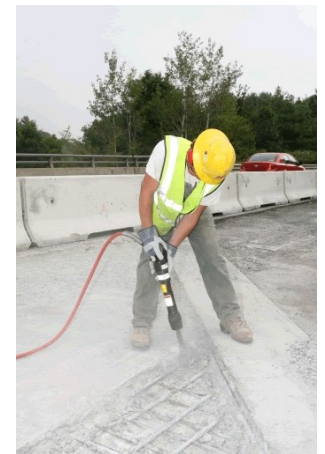
**Please call us at (604) 299-8358
to confirm rates and availability.**



RENTAL RATE GUIDE

TABLE OF CONTENTS

<u>Category</u>	<u>Page</u>
Air Compressors	5
Air Tools & Accessories	5
Bobcat Equipment	3
Boom Lifts	14
Breakers	6
Compaction Equipment	6
Concrete Equipment	6
Drills & Accessories	7
Electrical Equipment	7
Fans	8
Generators	7
Heaters	8
Hilti Equipment	4
Hoists & Jacks	8
Hoses	9
Household Equipment	9
Ladders	10
Lawn & Garden Equipment	10
Material Handling	11
Paint Sprayers	11
Plumbing Equipment	12
Pressure Washing Equipment	11
Pumps	11
Sanders & Grinders	12
Saws & Cutters	13
Scaffolding	13
Scissor Lifts	14
Skidsteer Loaders	3
Traffic Control	14
Welding Equipment	14





Bobcat & Skidsteer Equipment

\$/Day

\$/Week

\$/Month

Bobcat T590 Track Loader	340	1300	3300
Bobcat S130 Loader	190	760	1980
Kubota SSV65 Loader	235	900	2400
Bobcat E20 Excavator (4,300 lbs)	200	800	2400
Bobcat E26 Excavator (6,091 lbs)	258	1025	3075
Kubota U27 Excavator (5,711 lbs)	258	1025	3075
Bobcat HB680 Breaker (150 ft.lb.)	125	500	1400
Bobcat HB980 Breaker (500 ft.lb.)	180	750	2050
Bobcat Auger Attachment w/bit	96	360	950
Bobcat Forks / Tooth Bucket	35	125	300
Bobcat Grapple Bucket (66")	100	340	900
Bobcat Scrubber Assembly	100	200	450
Bobcat Solid Tires	100	200	500
Bobcat Sweeper Attachment	150	750	1800



Hilti Equipment

	<u>\$/Day</u>	<u>\$/Week</u>	<u>\$/Month</u>
Hilti AG600 Cordless Angle Grinder	25	100	250
Hilti VC40 or VC150 Concrete Vacuum	60	240	500
Hilti VC75 / VC150 Cordless Vacuum System	25	100	250
Hilti DG150 Diamond Grinding System	40	160	350
Hilti DGH130 5" Palm Diamond Ginder	30	120	300
Hilti DCH300 Electric Cutoff Saw	45	180	480
Hilti DSH600/700 Cutoff Saw (gas or battery)	50	190	450
Hilti DSH-FSH Cutoff Saw Cart	20	80	160
Hilti DD150 Core Drill	85	340	1020
Hilti DD Core Drill Stand Assembly	20	80	220
Hilti DWP10 Water Supply Unit	10	40	100
Hilti DX460 Nail Gun	20	60	150
Hilti HDM500 / MD2500 Epoxy Hit Kit	15	60	150
Hilti PMC46 Combi Laser	20	60	150
Hilti PR2 / PR30 Laser Level	60	180	450
Hilti PX10 Transpointer	50	150	300
Hilti SC60 Cordless Circular Saw	25	100	250
Hilti TE2 SDS Hammer Drill	30	100	260
Hilti TE2 / TE4 Cordless Hammer Drill	30	100	260
Hilti TE30-C Rotary Hammer	35	135	300
Hilti TE30C Cordless Rotary Hammer	40	160	340
Hilti TE60 Cordless Combi Hammer	40	160	340
Hilti TE60 or TE70 Combi Hammer	40	160	340
Hilti TE500 or TE700 Breaker	36	144	340
Hilti TE800 Breaker	45	180	425
Hilti TE1000 Breaker	50	200	500
Hilti TE2000 Breaker	60	230	550
Hilti TE3000 Breaker	75	244	610





Air Compressors

	\$/Day	\$/Week	\$/Month
4 – 7 cfm Air Compressor (electric)	32	128	300
14 - 24 cfm Air Compressor (gas)	45	190	460
185 cfm Air Compressor (diesel)	120	400	1200
210 - 250 cfm Air Compressor (diesel)	175	700	1900

Air Tools & Accessories

	\$/Day	\$/Week	\$/Month
Air Chisel w/bits	16	48	96
Air Manifold, 6 or 8	25	50	100
Blow Pipe	10	18	30
Bostich Air Spiker or Stick Nailer	15	75	185
Brad Nailer (air)	15	75	185
Coil Nailer (air)	25	80	165
Flux Chipper (air)	25	80	215
Impact Wrench, 1/2" (air)	18	75	185
Impact Wrench, 3/4" (air)	50	200	450
Line oiler	5	15	30
Needle Scaler (air)	25	80	215
Rock Drill, 55lb	50	200	550
Roofing Nailer (air)	25	100	250
Shutoff Valve (air)	6	24	48
Stapler (air)	25	75	200
Stick Nailer	15	75	185
Texture Machine (air)	30	120	360



Breakers



	\$/Day	\$/Week	\$/Month	\$/Day
15lb Air Chipper	32	125	300	
30lb Air Chipper	32	125	300	
60lb Air Breaker	35	128	325	
80lb Air Breaker	38	139	350	
Bosch Brute 80lb Breaker	75	244	610	
Flux Chipper, air	23	75	168	
Hilti TE30-C Chipper	35	135	300	
Hilti TE60 / TE70 Combi Hammer	40	160	340	
Hilti TE500 or TE700 Breaker	45	180	425	
Hilti TE1000 Breaker	50	200	500	
Hilti TE2000 Breaker	60	230	550	
Hilti TE3000 Breaker	75	244	610	
Rivet Buster, air	65	250	625	



Compaction Equipment

Air Backfill Tamper	45	160	400
Jumping Jack	65	247	611
Plate Compactor, 150lb – 250lb	45	180	450
Plate Compactor, 500lb – 600lb Reversing	100	400	1000
Plate Compactor, 1000lb – 1200lb Reversing	140	550	1620



Concrete Equipment



	\$/Day	\$/Week	\$/Month
Bull Float	10	39	77
Cement Mixer, 5 cu.ft. (electric)	35	145	360
Core Drill, Hilti DD150	85	340	1020
Concrete Vibrator	35	120	350
Mortar Mixer, 9 cu.ft. (gas)	90	360	750
Paving Stone Cutter	25	100	200
Tarp, insulated 12' x 20'	30	30	60
Wheelbarrow	15	60	120



Drills & Accessories

	\$/Day	\$/Week	\$/Mon
1/2" Angle Drill	18	72	214
1/2" Drill Press	22	88	200
3/4" Drill (electric)	18	75	185
Cordless Drill, 1/2"	18	75	185
Cordless Hammer Drill, Hilti TE30-C	36	144	340
Hilti DD150 Core Drill	85	340	1020
Hilti DD Core Drill Stand Assembly	20	80	220
Drywall Screwgun	12	44	110
Impact Wrench, 1/2" (electric)	15	60	150
Impact Wrench, 3/4" (electric)	24	92	225
Hammer Drill, sds plus	26	80	260
Hammer Drill, sds max	36	144	340
Hole Hawg, 1/2"	27	108	270
Mag Base Drill, 3/4" chuck	75	300	650
Screwgun, 3' upright (Pam)	40	120	325



Generators & Electrical Equipment

	\$/Day	\$/Week	\$/Month
2200 Watt Generator / Invertor	35	175	500
3000 Watt Generator	37	175	500
3500 Watt Generator/Invertor	45	175	500
4000 - 4500 Watt Generator	55	200	520
5500 Watt Generator	60	240	600
6000 – 6500 Watt Generator	66	240	600
Portable 1000 watt Light w/12' Stand (110V)	45	160	360
Temporary Power Box	30	120	300
Wobble Light, 400 Watt Metal Halide	28	75	210



Heaters & Fans

	\$/Day	\$/Week	\$/Month
24" Fan, 5000 cfm	24	72	200
36" Fan, 14000 cfm	45	125	375
Copus Blower, 1500 - 2800 cfm	40	160	420
Dehumidifier, commercial	50	200	600
Pos/Neg Fan / Ventilating Fan, 12"	30	80	200
Dri-Pod Floor Dryer (Drieaz)	20	60	150
Turbo Fan	24	72	20
Electric Heater, 110V or 220V	10	30	60
Diesel / Kerosene 177M BTU Heater	30	100	250
Natural Gas Heater, 100M BTU	30	90	200
Natural Gas Heater, 400M BTU	40	180	290
Propane Heater, 32M BTU Radiant	15	45	120
Propane Heater, 150M BTU	20	60	150
Propane Heater, 300M BTU	30	90	250
Propane Heater, 400M BTU	40	180	450
Propane Heater, LB White (80M btu)	40	180	400
Tarp, insulated 12' x 20'	30	30	60



Hoists & Jacks

	\$/Day	\$/Week	\$/Month
Chain Hoist, 1 – 2 Ton	25	80	225
Chain Hoist, 3 Ton	40	200	500
Come-Along, ¾ Ton	20	70	150
Come-Along, 1 ½ Ton	25	80	200
Drywall Gypsy Jack	30	120	300
Engine Hoist	30	120	300
Floor Jack, 2 Ton	20	75	205
Genie CO2 Hoist 12' (350lb)	50	200	500
Genie Superlift, 24' (650lb)	70	280	650
Hydraulic Jack, 20 Ton	20	60	150
55 Ton Pancake Ram	40	160	380
PortaPower w/splitter or ram	45	180	450
Telepost Shoring Jack	5	15	30
Tirfor, ¾ Ton	30	120	300
Tirfor, 1 ½ Ton	45	180	360
Tirfor, 3 Ton	95	250	500



BoleStacia



Hose & Ducting

	\$/Day	\$/Week	\$/Month
Air Hose, 3/8" x 50'	5	18	36
Air Hose, 3/4" x 50'	10	30	60
Air Hose, 1" x 50'	10	30	60
Bull Hose, 2" x 50'	29	86	235
Discharge Hose, 2" x 50'	10	25	48
Discharge Hose, 3" x 50'	12	28	69
Discharge Hose, 4" x 50'	15	60	125
Ducting, 12" x 12"	20	60	180
Fire Hose, 1 1/2" x 50'	15	45	100
Garden Hose, per 50'	5	12	23
Heater Hose, Natural Gas, per 25'	10	25	50
LB White Heater Ducting	15	45	130



Household Equipment

	\$/Day	\$/Week	\$/Month
Carpet Kicker	10	39	77
Carpet Stapler	18	72	144
Dehumidifier	50	200	600
Floor Scrubber, 17"	30	120	320
Glass Suction Cups / Vacuum Cups	10	32	64
Hardwood Flooring Nailer	25	100	250
Lino Roller	15	45	125
Magnetic Broom	10	40	95
Shop Vac, Ridgid	30	75	180
OZONE / UV Generator	45	180	405
Pin Locator / Metal Detector	33	99	250
Tent, 10' x 10'		150	350
Tile Scraper, Hand	8	24	59
Tile Stripper, Electric	60	190	550
Vacuum Cups	10	32	64
Wall Paper Steamer	30	96	240



Ladders & Accessories

	\$/Day	\$/Week	\$/Month
Extension Ladder, 20' – 24'	20	80	200
Extension Ladder, 28' - 32'	25	75	250
Extension Ladder, 36' – 40'	30	90	280
Extension Ladder, 48' (43' total reach)	40	200	500
Ladder Jacks, pair	10	30	75
Ladder Stay Aways, pair	6	8	16
Painters Plank, 16' – 24'	25	80	160
Pruning Ladder, 14' - 16'	20	80	200
Step Ladder, 6' – 8'	11	44	95
Step Ladder, 10' – 12'	14	49	120
Step Ladder, 16'	30	90	220



Lawn & Garden Equipment

	4hr	\$/Day	\$/Week	\$/Month
Aerator (Ryan, Bluebird, Husky)	60	100	400	950
Blower, backpack (gas)	40	60	240	480
Blower, handheld (gas)	25	35	150	300
Chainsaw, gas	40	50	175	375
Hedgetrimmer, pole (gas)	65	90	400	800
Hedgetrimmer, hand held (gas)	32	48	168	420
Lawn Mower (gas)	40	60	240	400
Lawn Roller		15	45	110
Multi-Tool Shindaiwa M242	40	50	200	400
Multi-Tool Attachments		20	80	240
Pole Hedgetrimmer (gas)	65	90	400	800
Pole Saw, chainsaw	45	70	300	700
Post Auger, 2 man (gas)	33	64	256	768
Power Rake, commercial	60	100	400	950
Rototiller, 5hp (mid tine)	60	100	400	950
Stump Grinder, 13hp	80	130	500	1200
Sump Spoon		10	30	60
Weedeater, gas	60	70	240	480



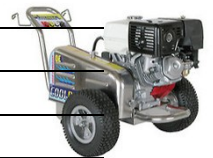
Material Handling

	\$/Day	\$/Week	\$/Month
Appliance Dollie	25	75	160
Forklift, Komatsu 5000lb	150	450	900
Hand Truck, upright	10	40	95
Hand Truck, 4 wheel w/handle	15	45	90
Machine Skates / Rollers 6Ton	15	60	120
Pallet Jack, 27" forks (5500lbs)	35	140	300
Piano Dollie, flat 4 wheel	12	48	96
Steel Banding Unit	20	80	225



Pressure Washers & Paint Equipment

	\$/Day	\$/Week	\$/Month
2500 psi	65	260	780
3000 psi	85	325	900
3500 psi (belt drive)	105	420	1200
4000 psi (belt drive)	105	420	1200
5000 psi (belt drive)	120	480	1200
Hot Water Unit (Landa)	100	400	1200
Paint Sprayer (Titan XT290)	70	280	450
Sand Blaster Attachment, wet	25	100	250
Sewer Cleaning Attachment, 100'	30	125	250
Whirl-a-way	30	90	230



Pumps

	\$/Day	\$/Week	\$/Month
Air Diaphragm Pump	75	300	800
Centrifugal Pump, 1" - 2" (gas)	30	95	230
Centrifugal Pump, 3" (gas)	37	140	325
Float Switch for pump	10	30	75
Submersible Pump, 1"	18	72	180
Submersible Pump, 2"	26	90	220
Submersible Pump, 2" Hi-Head	35	140	320
Submersible Pump, 3"	35	140	320
Trash Pump, 3" (gas)	37	140	340



Plumbing Equipment

	\$/Day	\$/Week	\$/Month
Acetylene "B" Tank	20	60	180
Drain Snake, Electric Eel Model CT	45	180	450
Drain Snake, Electric Eel Model RF	85	350	850
Drain Snake, Electric Eel Power	36	144	360
Drain Snake Cables, 8'	3	12	34
Hydrostatic Test Pump, hand	25	95	210
Pipe Camera 100' WiFi (Hathorn) c/w Pipe Locator	200	800	1900
Pipe Camera 200' (Hathorn) c/w Pipe Locator	250	1000	2500
Pex Crimping Tool (1/2", 3/4", or 1")	15	75	180
Pipe Cutters (1/8" – 6")	14	54	108
Pipe Dies, hand (1/8" – 2")	15	58	172
Pipe Wrench (10" – 48")	10	40	80
Ridgid 300 Power Pipe Threader	66	245	640
Snap Cutter	15	58	172
Stud Punches	12	45	135
Test Plug, blowup or mechanical (2" – 8")	9	18	36
Test Plug, double mechanical (2" – 6")	11	21	41
Test Plug, 8" double mechanical	12	45	90
Water Key	6	13	25







Sanders & Grinders


	\$/Day	\$/Week	\$/Month
Angle Grinder, 4 1/2" – 5"	16	60	140
Angle Grinder, 7" – 9"	17	54	130
Concrete Floor Grinder (MK 7")	40	160	350
Concrete Hand Grinder (Hilti DG150)	40	160	350
Palm Sander (Milwaukee)	15	60	125



Saws & Cutters

	\$/Day	\$/Week	\$/Month	
Brick Saw, 14"	90	360	900	
Chainsaw, gas	50	175	375	
Circular Saw, 7 1/4"	12	48	110	
Circular Saw, 16"	40	160	350	
Cutoff Saw, 12" Hilti Dustless	105	420	980	
Cutoff Saw, 14" Gas	50	190	450	
Floor Saw, 14"	70	250	625	
Metal Chop Saw, 14"	35	120	300	
Mitre Saw, Sliding Compound 12" (Milwaukee)	40	160	400	
Paving Stone Saw, 14"	90	360	900	
Portaband Saw	25	100	250	
Rebar Cutter & Bender (manual)	20	80	200	
Rebar Cutter (electric)	30	120	280	
Rebar Bender (electric)	70	280	650	
Sabresaw (Reciprocating saw)	20	80	200	
Table Saw, 10" (Bosch) w/stand	30	120	300	
Tile Saw, 10" (MK, Imer)	60	250	600	

Scaffolding

	\$/Week	\$/Month	
5' high Section Scaffolding (2 frames & 2 x-braces)	12	24	
Set of 4 castors	20	40	
Set of Guard Rail posts & double rails	16	32	
Set of 4 Screwjacks	8	16	
Deck, 7'	5	10	
Deck, 10'	6	12	
Outriggers (2) with x-brace	8	15	
Horizontal Gooser	2	4	
Baker Scaffold (complete with castors & deck)	60	120	

Traffic Control

	\$/Day	\$/Week	\$/Month
Barricade, 10'	2.00	14.00	35.00
Barricade, flashing 30"	2.00	14.00	35.00
Cones, 18"	1.00	3.00	12.00
Cones, 27"	1.00	4.00	16.00
Delineator Cones, 42"	3.00	10.00	30.00
Safety Rope Grab	15.00	30.00	55.00
Safety Harness	15.00	45.00	90.00
Safety Lanyard, 6'	5.00	15.00	45.00
Safety Rope, 50' w/1 hook end	10.00	45.00	125.00
Stop / Slow Paddles	3.00	10.00	30.00
Traffic Sign w/Stand	3.00	10.00	30.00



Welding Equipment

	\$/Day	\$/Week	\$/Month
400 amp Welder	200	750	1850
Air Arc Gouger	35	125	345
Mig Welder, Miller Wire Feed	45	140	325
Oxy/Acetylene setup	35	125	300



Scissor Lifts & Booms

	\$/Day	\$/Week	\$/Month
Genie Z30/20N Boom Lift	375	1200	3600
SkyJack 3219 Scissor Lift	120	375	925
SkyJack 3226 Scissor Lift	135	475	1125
SkyJack 4626 Scissor Lift	140	475	1125
Skyjack SJ16 Vertical Mast Runabout Lift	120	375	925



**If you need something and don't see it on this list, call us –
because if we don't have it, we'll tell you who does!
Ph: (604) 299-8358**